



# Modeling Cases in Türkiye

**Canan Esin KÖKSAL**  
**Environmental Expert (MSc)**

**DG for Environmental Management**  
**Ministry of Environment, Urbanization and Climate Change**

*TFIAM, 2026*

# Content

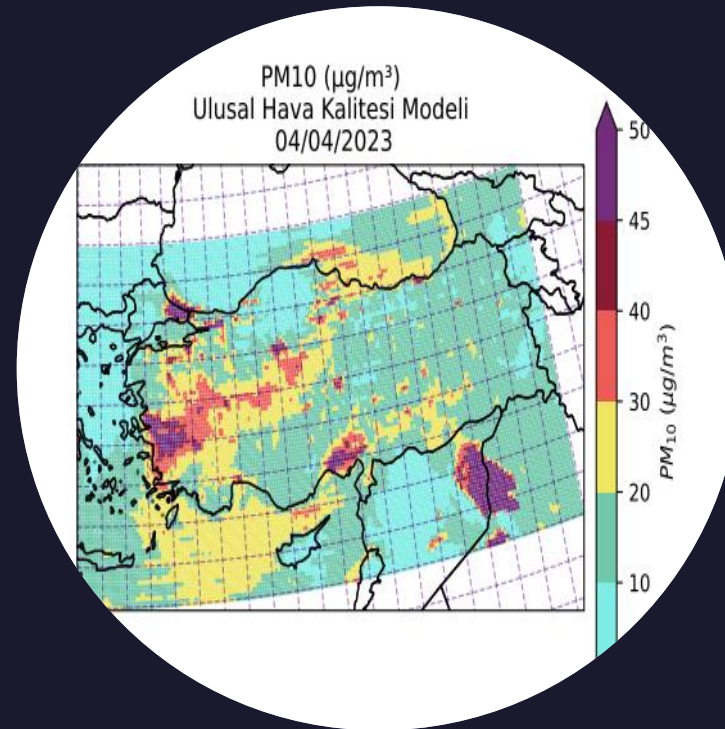
Current Situation

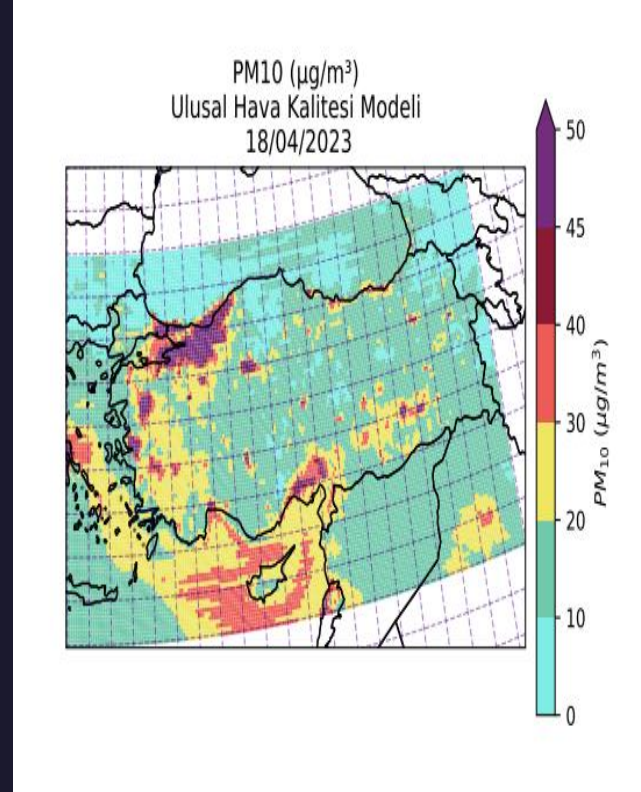
Modeling experience

Ongoing tasks, studies

Future Work

Conclusion





# Current Situation

- National Clean Air Action Plan; under progress
- CLRTAP Roadmap for further improvements; planned
- Softwares developed and being improved; NEFES and HEY Portal
- Modeling, mapping, exposure calculation, health relation topics for future strategies

# CLRTAP and Related Protocols' tasks

## ■ **Emission inventory reviews**

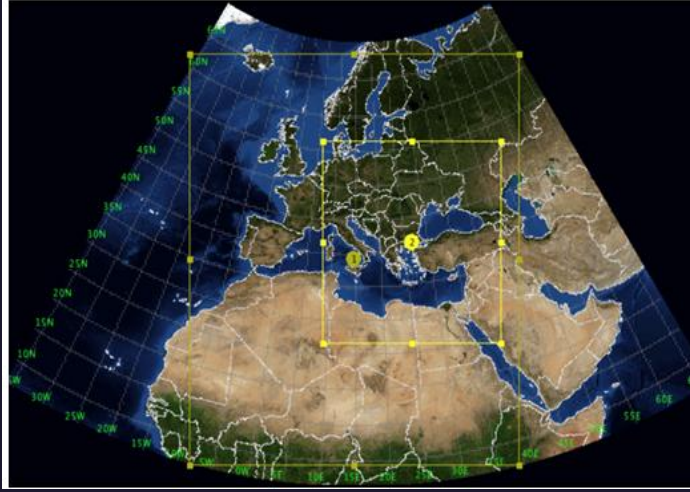
- ✓ Türkiye is being involved since 2012
- ✓ Recommendations are listed for priorities within national strategies

## ■ **Modeling capabilities**

- ✓ National scale, local scale
- ✓ Air quality forecasts since 2021
- ✓ MOEUCC own servers are active

# Modeling Experience, Türkiye

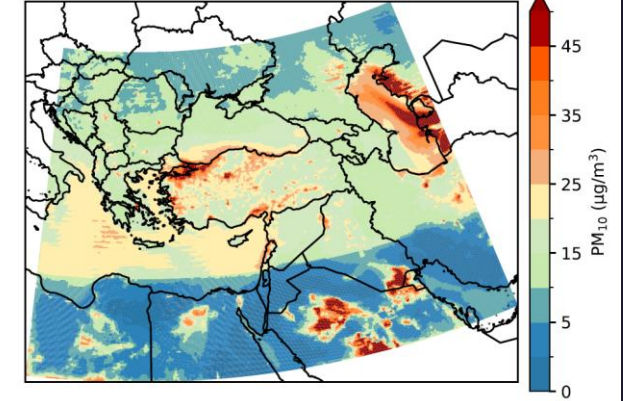
Belirlenen model çalışma alanları



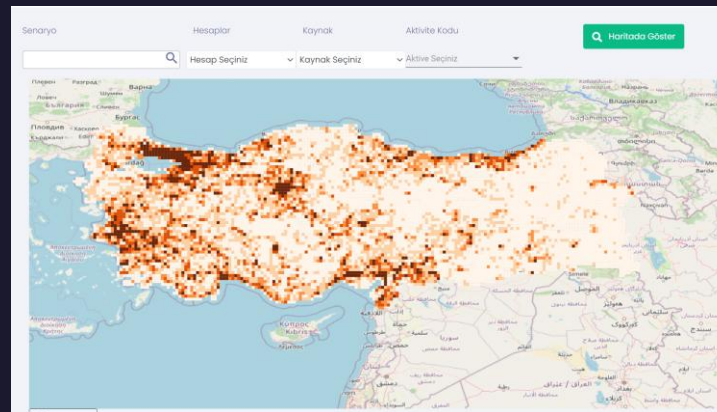
Şekil -1 İstanbul ili Kağıthane ilçesi 24 Eylül 2021 NEFES Yazılımı Çıktısı



PM<sub>10</sub> (µg/m<sup>3</sup>)  
Ulusal Hava Kalitesi Modeli 17-04-2025



## Sustainable Development Goals



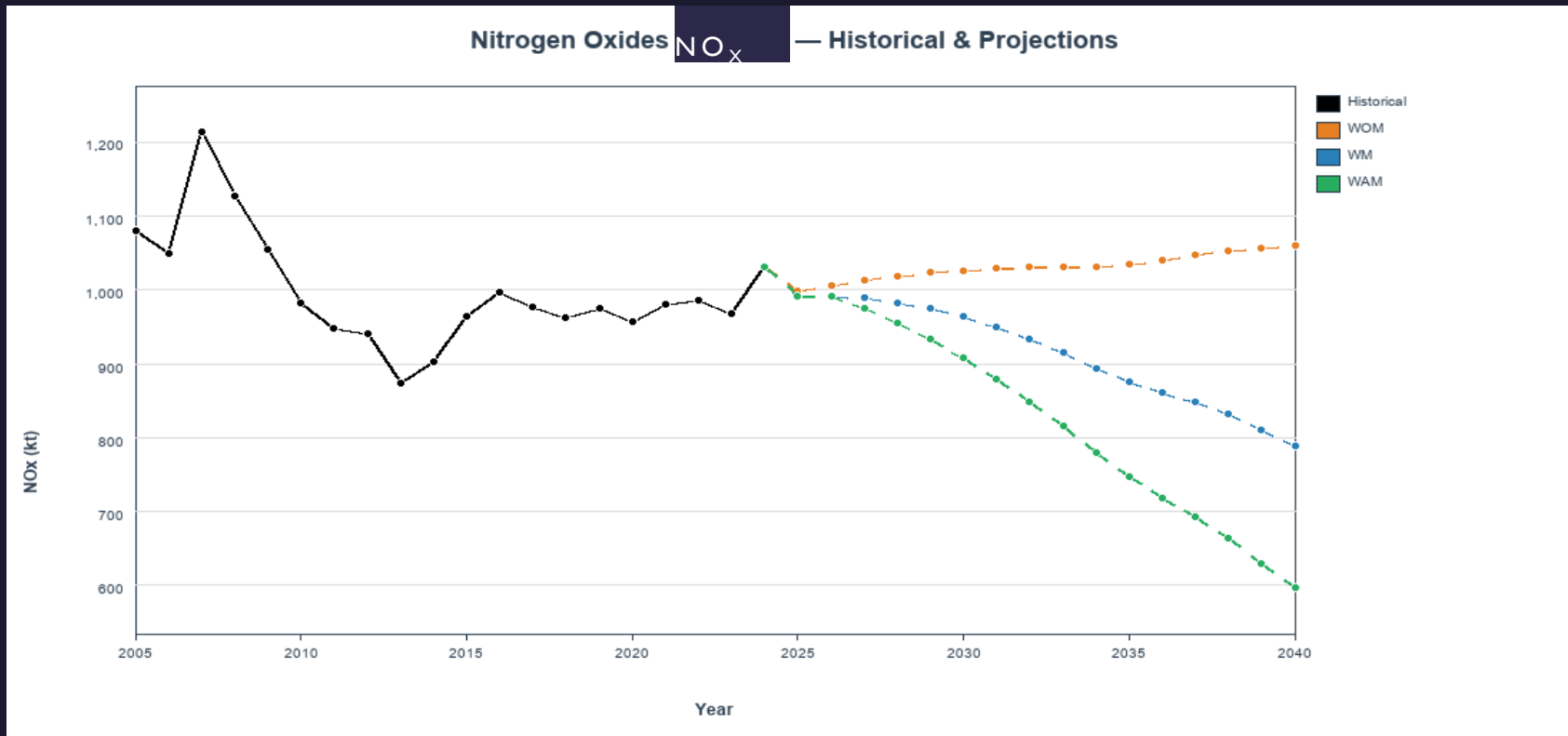
# Ongoing Tasks and Studies

- **Emission projections**
- **Emission scenarios to be extended in number and content**
- **Exposure related calculation and mapping**
- **Health impacts of air quality in Türkiye**

# Legislative Structure and Future Tasks



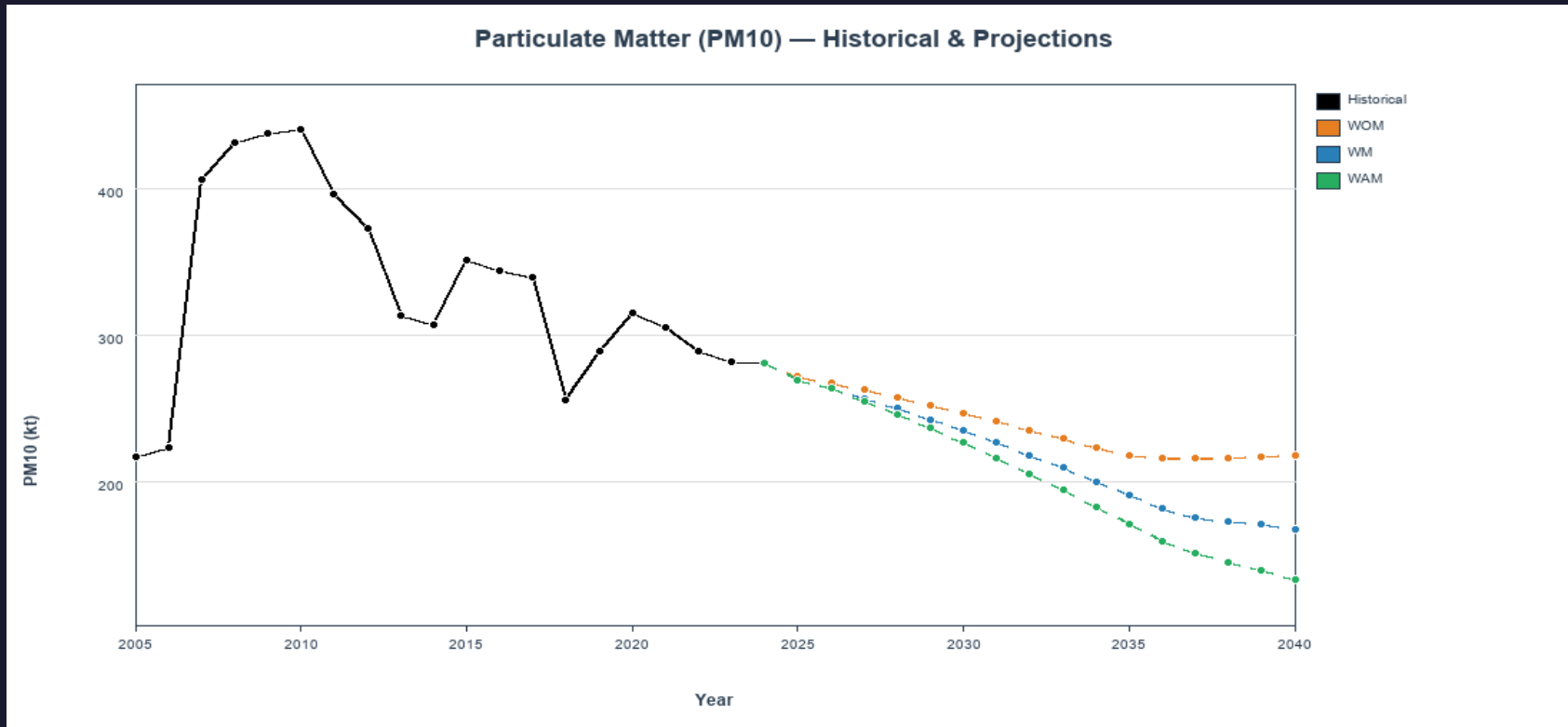
# Preliminary Results for Projections



PRELIMINARY

Trends within the inventory and the production statistics, population properties, legislative actions, sectoral improvements

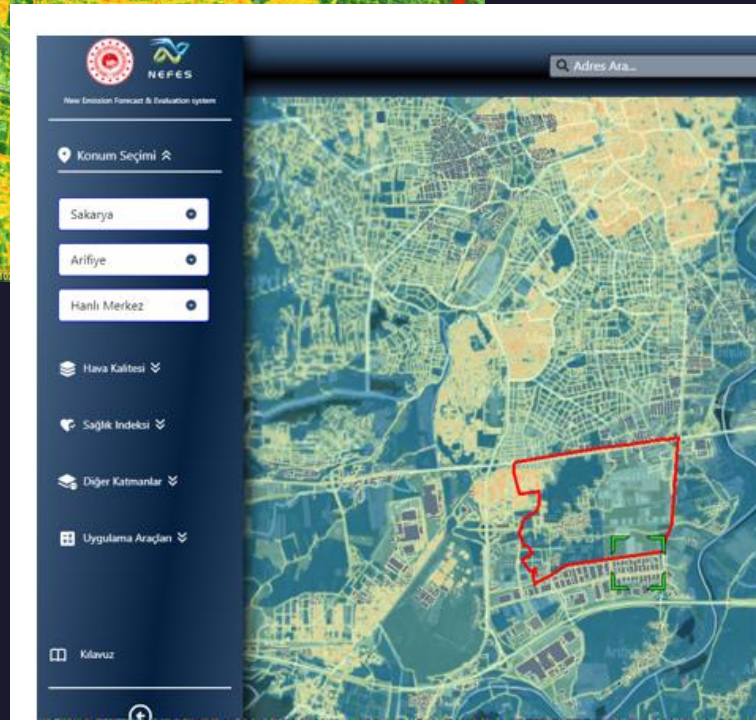
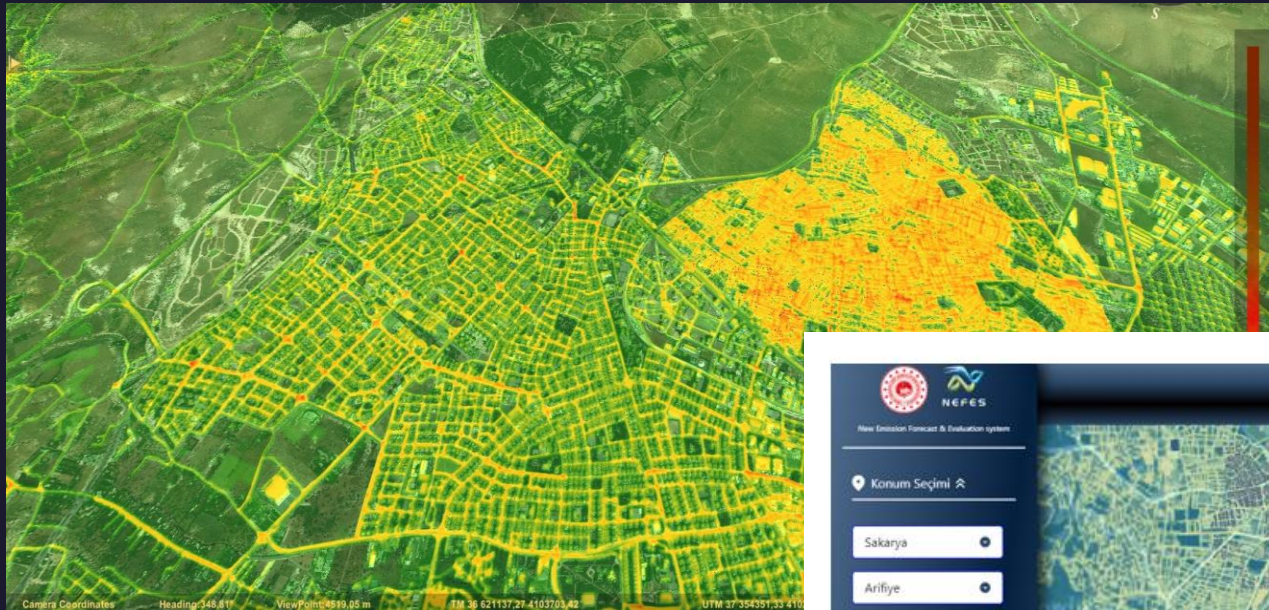
# Preliminary Results for Projections



PRELIMINARY

Trends within the inventory and the production statistics, population properties, legislative actions, sectoral improvements

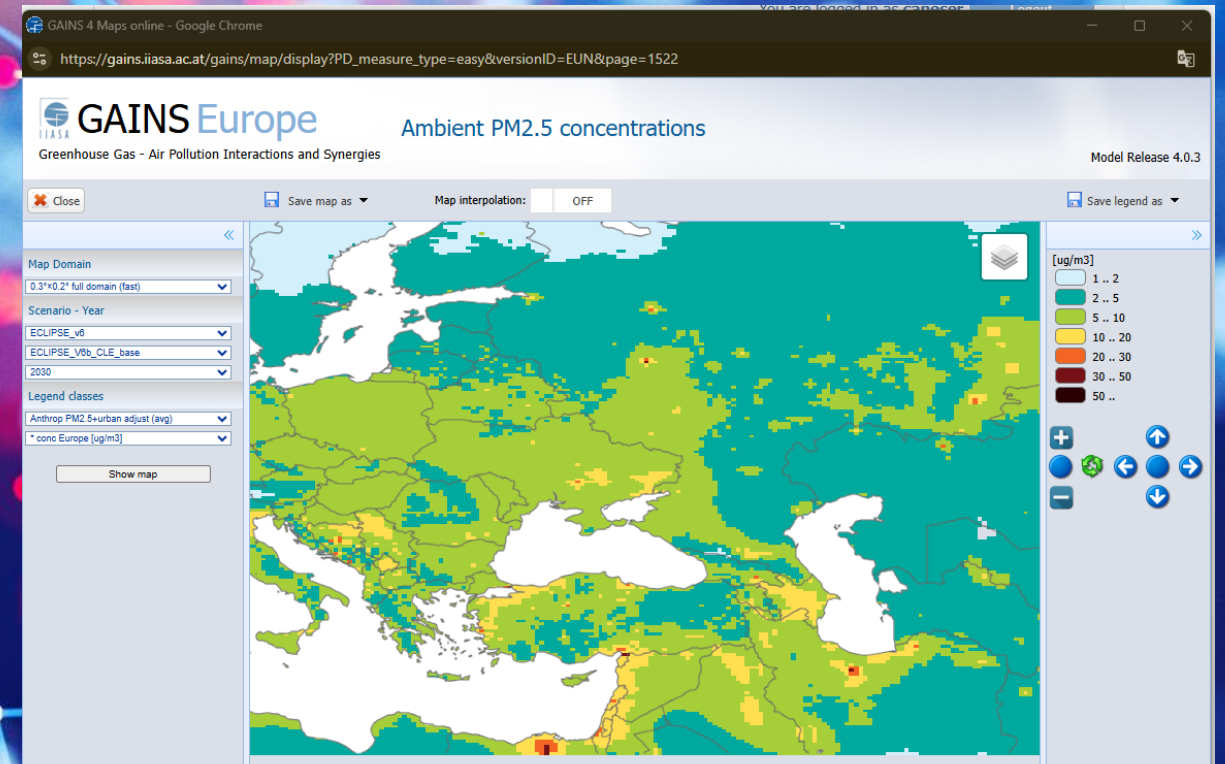
# Exposure calculations, mapping, future tasks



## METHODOLOGY

- Cooperation with Ministry of Health for Relative Risk values-RR
- NEFES software serves basis with geographical smart data and to be integrated by the health related assumptions, country specific priorities, population weighed results
- Academical research to be used and evaluated; web based research and international references

# International Framework Conclusion



GAINS classifications to be evaluated step-by-step

NDC relation to be involved

Strategies to be integrated in the accurate positioning



# Thank you for your attention

*Canan Esin KÖKSAL, MSc*

 [cesin.koksal@csb.gov.tr](mailto:cesin.koksal@csb.gov.tr)

*Telephone: 00903 125863 155*

