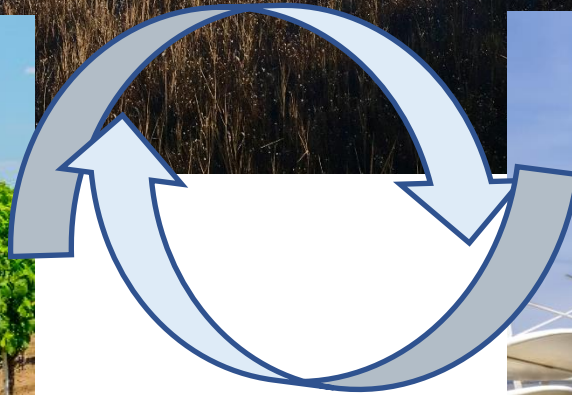


WATERSTRESS_{AT}

A local systems-based approach to explore water stress under climate change

Susanne Hanger-Kopp, 6th ECCA 21 June 2023

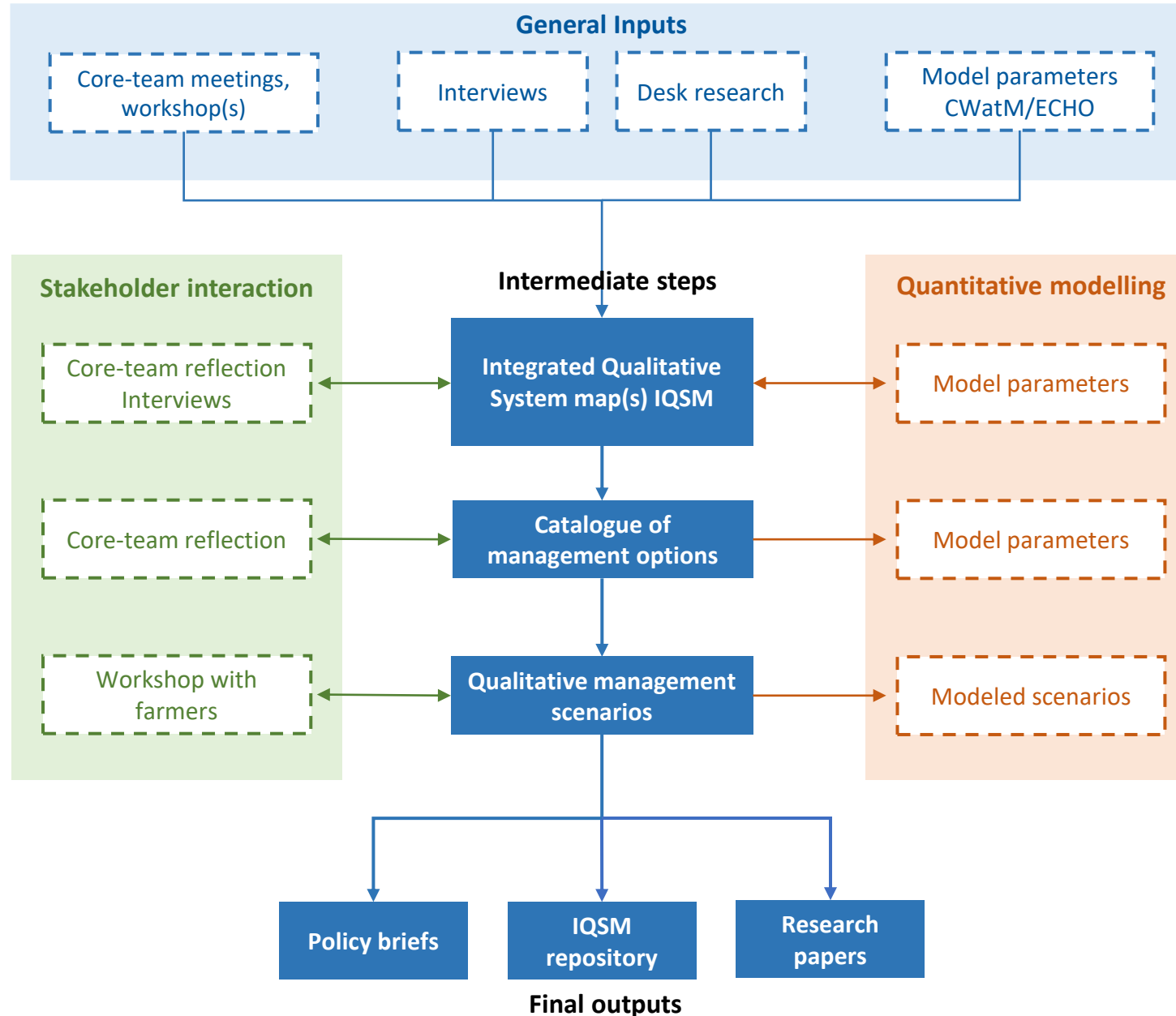




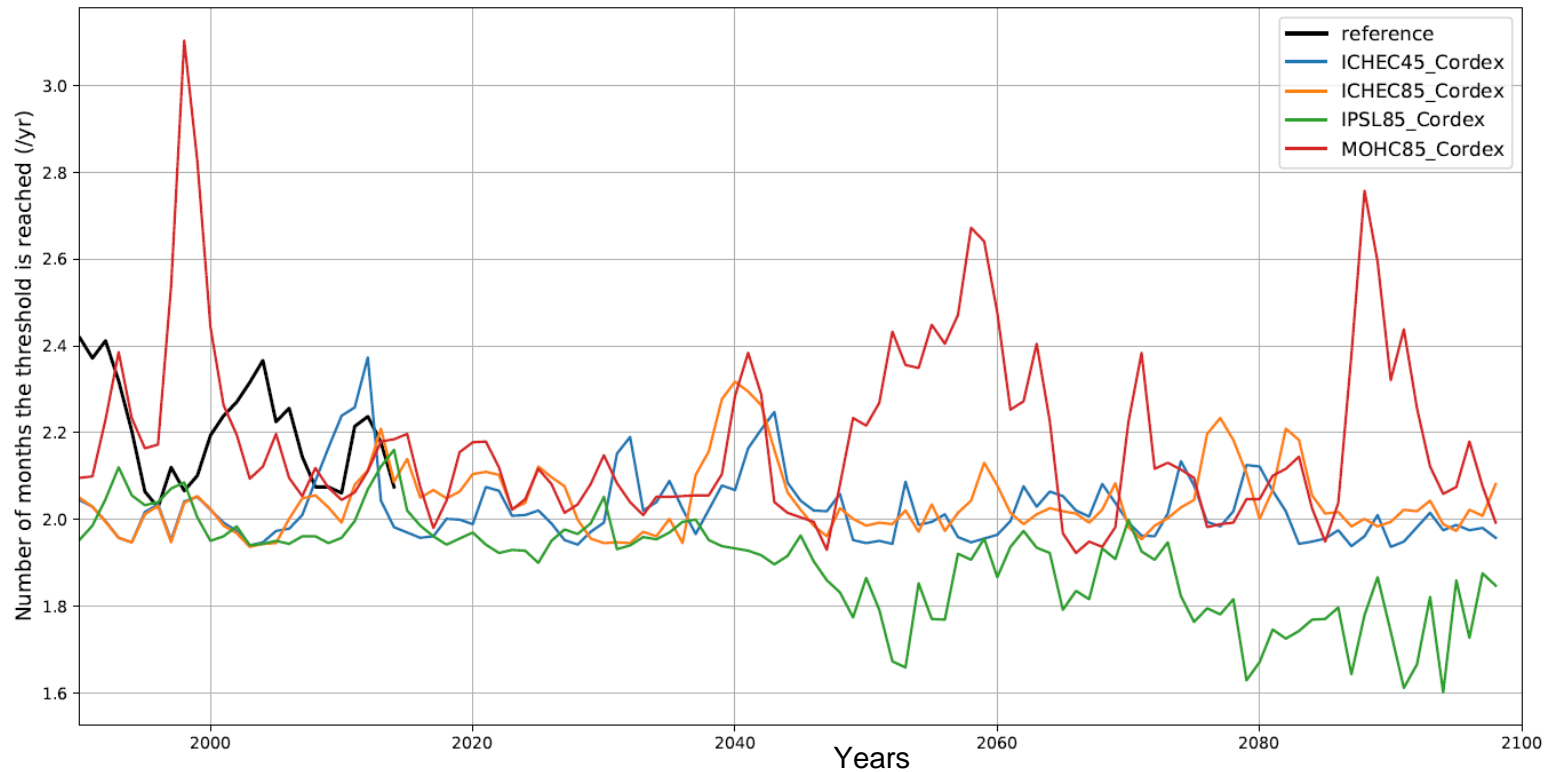
Sources:

- Photo 164368128 | Seewinkel © Prillfoto | Dreamstime.com
- Photo 246894671 | Seewinkel © Dudlajzov | Dreamstime.com

WaterStressAT project design

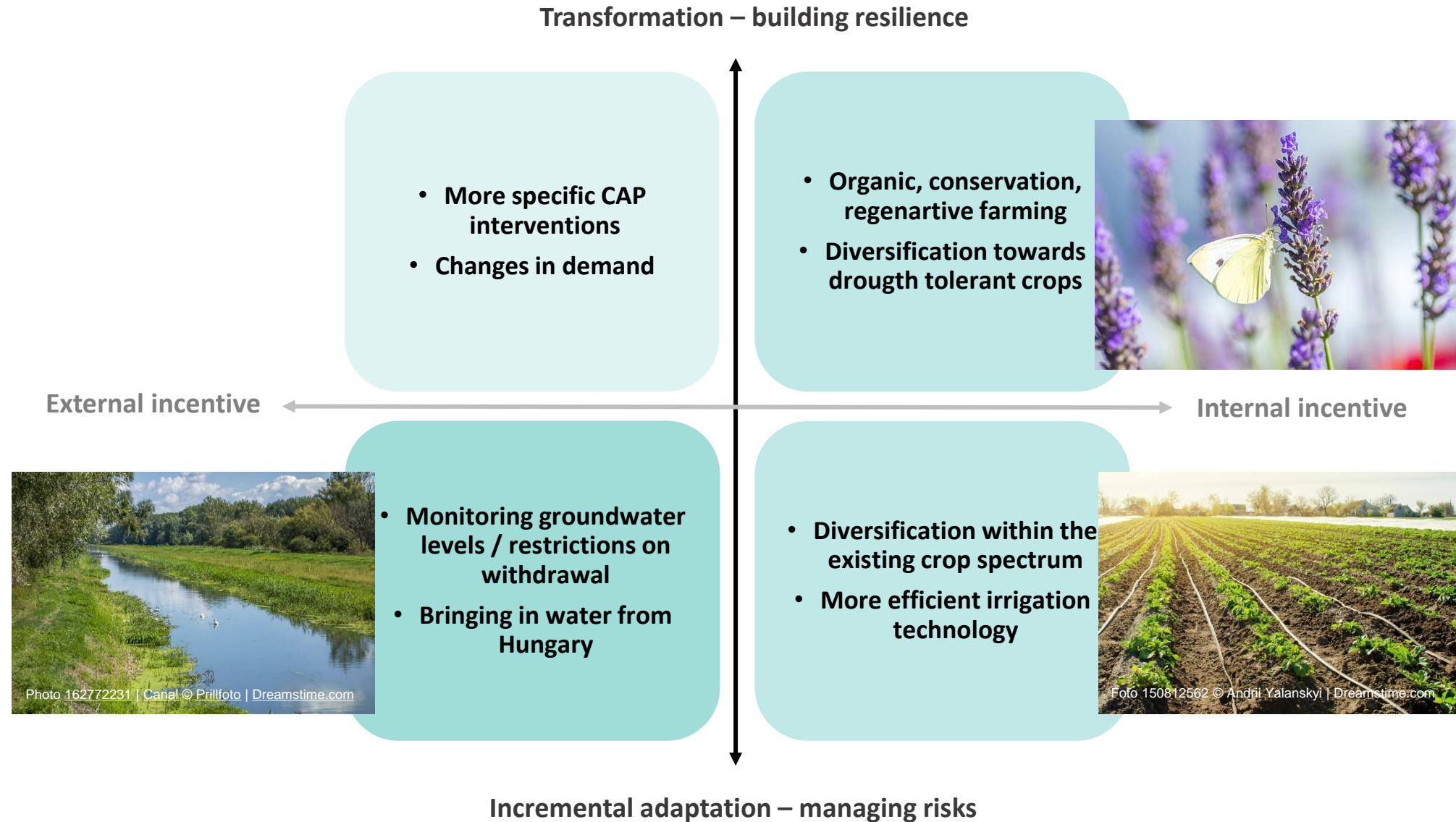


Modelling groundwater levels with the Community Water Model (CWatM)

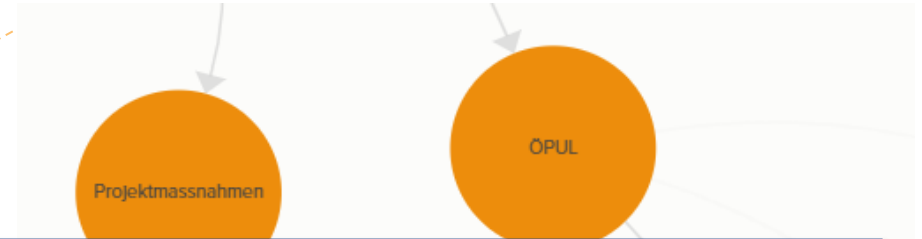


Three out of four scenarios show similar means, but longer and more pronounced periods of low water levels.

Adaptation options in the agricultural sector



EU Common
Agricultural Policy
(2023-2027)



Gap between Green Deal – CAP ambition and locally specific transformation needs

- Minimum standards that target our management options
- Strong focus on soil



Reducing agricultural irrigation in Seewinkel for sustainable water management

Some challenges for transformation...

- Communicating model results...
 - ... participants preferred focusing on optimistic scenarios, deflecting from more radical options.
 - ... model cannot reflect decision making realities of farmers.
- The dominant discourse preserves status-quo of agri. practice
 - ... how to scale-up sustainable niche practices, requires actors and levels of action beyond the agri sector,
 - ... and lack of opportunities to tailor agricultural policies at the sub-national level.

Contact us!

Susanne Hanger-Kopp, Julia Beier

International Institute for Applied Systems Analysis

E-Mail: hanger@iiasa.ac.at, beier@iiasa.ac.at

www.iiasa.ac.at/waterstressat

WATERSTRESS_{AT}

umweltbundesamt^U



powered by klima+
energie
fonds